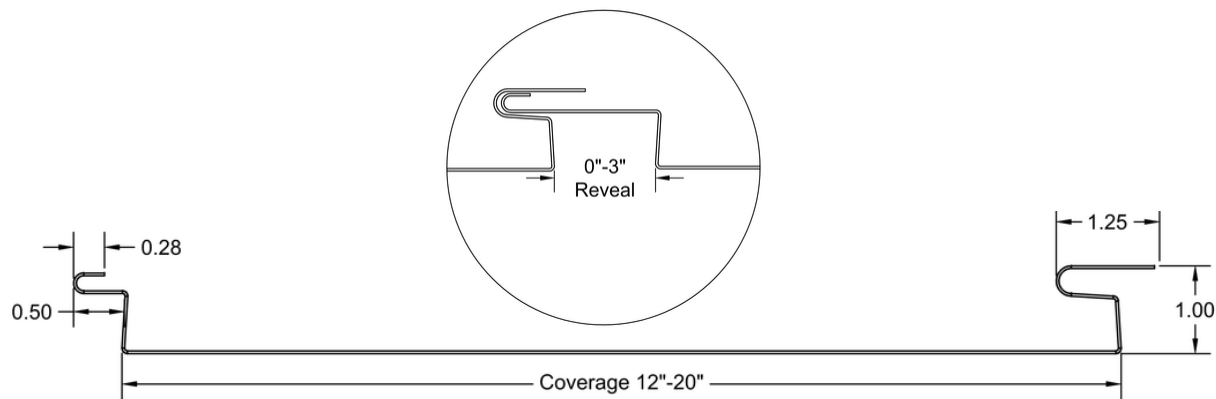


Flush and Reveal Wall/Soffit Panel

From subtle elegance to modern sophistication, the smooth, uniform appearance of NC FWQ panel is certain to please. This expertly crafted panel is ideally suited for a wide range of applications, included fascias, walls, equipment screens and soffits.

The concealed male and female connection achieves a distinctly superior finished look and stiffener beads also can be used to further safeguard the flush appearance. Available in a solid or perforated panel.

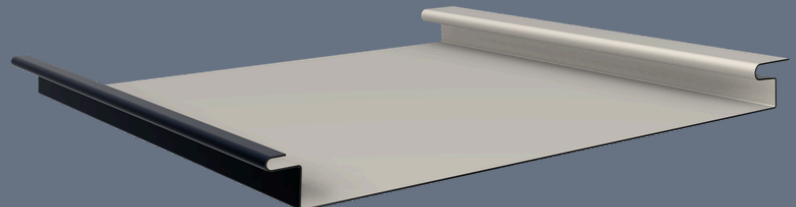
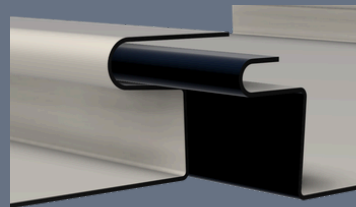


A panel width of 12" is recommended for optimal material usage and minimizing the likelihood of oil canning. Maximum panel length of 30ft is recommended for the same reason.



Benefits & Quality Assurance

- Available with adjustable reveal 0"-3"
- Color & Batch matching to Edge metal
- Multiple Material & Finish Options
- Cut-to-length for your projects requirement
- Available in perforated option for vented soffits



PRODUCT INFORMATION

Tested Standards:

- ASTM E-1592 Uniform Static Air Pressure
- ASTM E-283 Air Leakage
- ASTM E-331 Water Penetration
- UL 2280 Impact Resistance
- UL 1987 Extended Phase Wind Uplift
- UL 263 Fire Certification
- UL 2219 Class 4 Hail Impact

Finishes and Product Warranty:

Material	Warranty Length
Kynar Coated Aluminum	35 year
Kynar Coated Galvalume	25 year
Galvalume+ AZ55	25 year
Copper	25 year
Zinc	varies

*specialty products on request.

Panel Specification:

Panel Name	FWQ 1
Standard Panel Width	12", 16", 20"
Available Panel Width	12" - 20"
Minimum Length	12"
Maximum Recommended Length	30'-00"
Weatheright Warranty Approved	Yes
Recommended Minimum Pitch	N/A
Site-Forming Available	Yes
Total Uplift Pressure	-210 psf*
Aluminum Availability	.032"-.040"
Galvalume Availability	26ga-22ga
Copper Availability	16oz-24oz
Zinc Availability	0.7mm-1.2mm

*design pressures require safety factor to be added

